

Norco NEWSLINE



Safety Builds Rainbow Rehab Park

Have you seen Rainbow Rehab Park on River Road?

It's built on a foundation of safety, generosity, and community commitment. The new handicapped accessible play system, designed especially for pediatric physical therapy patients officially opened with a ribbon cutting ceremony this summer. The playground is an extension of St. Charles Parish Hospital, managed by Ochsner Health System, at the Plantation View Medical Offices in Destrehan, home to the hospital's Physical Therapy services.



St. Charles Parish President **Matt Jewell**, Parish officials, Shell Norco employees and Norco contractor companies joined St. Charles Parish Hospital administrators and staff to officially open Rainbow Rehab Park, a handicapped accessible playground.

The unique play system was funded by more than \$100,000 in donations from Shell Norco and its contractor partners raised during two turnarounds based on safe work performance.

Safe work milestones including no OSHA injuries, along with financial incentives for safety observations in the field generated donations for an important charitable goal - the constructing and equipping of an adaptive playground.

In addition to Shell Norco, contractors contributing to Rainbow Rehab Park included:

- Turner Industries Group
- Petrochem Field Services
- Brown Industrial Construction
- Deep South Crane & Rigging
- Excel Modular Scaffold
- JHA Safety, Specialty Welding and Turnarounds
- TEAM
- Aqua Drill
- MMR
- Vallen
- Hydrochem Industrial Services
- Integra Services Technologies
- Capital Ultrasounds
- ISC Constructors
- Analytic Stress Relieving
- BrandSafway
- Kaizen Mechanical Services
- Versa Integrity Group
- Controlworx

RAINBOW REHAB

Shell Norco | Turner Industries Group | Petrobram Field Services | Brown Industrial Construction | Deep South Crane & Rigging | Local Modular Scaffold | UJA Casey
 Specialty Welding and Turnarounds | TEAM | Aqua Drill | MMR | Vallen | Hydrachem Industrial Services | Integra Services Technologies
 Capital Ultrasonics | ISS Constructors | Analytic Stress Relieving | BrandSafely
 Karen Mechanical Services | Versa Integrity Group | Contractors

Park

“A charitable goal, especially to assist children, gave us the extra motivation to work safely,”

said Maintenance, Turnaround and Construction Manager **Earnest Maxwell**, who represented Shell Norco at the ribbon cutting. “More importantly, that motivation helped make a difference in the lives of others for many years to come.”

RAINBOW REHAB PARK offers a recreational setting for children with challenges ranging from cerebral palsy to brain injuries. “The specially designed equipment gives children the opportunity to have fun but is also a strengthening tool as part of physical therapy,” explained Director of Physical Therapy **Jimmy Miller**. He noted that physical therapy through play can help develop gross motor skills, communication skills and build self-esteem.

“Not every clinic has such a facility,” emphasized Clinic Supervisor **Meredith Bucher**, thanking Norco and its contractors for their contributions to the park. “The playground enhances the therapy journey with extra motivation and challenges in a novel environment. And I can tell you that our patients’ parents are just as excited as the kids.”

“This is an exciting time for St. Charles Hospital to be able to offer state-of-the-art equipment to serve the children of our community by helping them strengthen their motor skills and their speech skills in an outside environment,” said CFO, River Region, Ochsner, **Tara Alleman**. “All children love to be outside.”

Members of the St. Charles Parish Hospital, managed by Ochsner, Physical Therapy and Occupational Therapy staff celebrate new facilities to enhance outdoor therapy.



Earnest Maxwell emphasizes that working safely with an incentive to help children in the community is a challenge with many benefits.



Norco Production Manager **Jack Holden** and Vallen Industries discuss the importance of safe work performance.

“The playground enhances the therapy journey with extra motivation and challenges in a novel environment. And I can tell you that our patients’ parents are just as excited as the kids.”

MEREDITH BUCHER | SCPH Clinic Supervisor

Turner Industries Operations Manager Jonathan Guidry, representing the contractor community added that they were proud to participate in the ribbon cutting ceremony as well as the commitment to safety especially when it results in a benefit for children.

“Vallen has always done a lot in the community,” said Vallen Business Development Manager **Dustin Kirkland**. “When Shell offered the opportunity to participate in this project, we jumped at the chance. What a great facility to have right here in the backyard of St. Charles Parish.”

“We like to think we have a leading edge in safety and work safely whether there is an incentive to do so or not,” stated **Shawn Colclough** of ISC. “But it is certainly exciting to see that safe work can provide an opportunity for kids who need therapy to have fun in a healthy environment.”

“Anything that can drive us to work safer is a good thing,” said Deep South Crane & Rigging HSE Manager **Adam Jean**. “Children are our future, and we are always happy to partner in these types of programs.”

NCF and NEDF Endowment Funds Deliver and Grow

The Norco Community Fund (NCF) was established in 1999 with a \$1 million endowed gift from Shell Chemical and Motiva Enterprises.

Twenty-three years later \$930,000 in grants have been awarded to Norco non-profit organizations to enhance the quality of life in the community.

Today, the endowment fund balance is \$1.4 million.

The Norco Economic Development Fund (NEDF) was established in 2003 with a \$5 million, including \$4 million endowed, gift from Shell Chemical and Motiva Enterprises to address social and economic issues at the local level in a manner that increases the capacity of the community.

Nineteen years later, just over \$3 million have been awarded in grants.

Today, the fund balance is \$5.8 million.

"The funds continue to grow, and we can assure you that grants will be awarded according to the fund's guidelines for many, many generations to come."

ROY WILLIAMS
Director of Grantmaking, GNOF



Greater New Orleans Foundation (GNOF) Director of Grantmaking **Roy Williams** reviewed the NCF and NEDF activities and growth for members of the Norco

Community Advisory Panel (CAP) at a recent meeting of the group. "The funds continue to grow, and we can assure you that grants will be awarded according to the guidelines for many, many generations to come," he said.

GNOF, which manages the donor advised - by Norco citizens - funds, is one of the most trusted philanthropic organizations in the region, serving a thirteen parish area for almost 100 years. "We work every day to drive positive impact through philanthropy, leadership and action," Williams explained. "In addition to grantmaking, we convene people, resources, and ideas to create intelligent strategies and solutions to meet our region's greatest challenges."

Williams emphasized that the Norco Community Fund only considers support for programs that serve the Norco community and its residents with priority given to children and youth services, elderly services, human services, health care/wellness services, and basic human needs. Grants are also awarded to Norco organizations for development including capital expenses for facilities or equipment such as air-conditioning for the Norco Civic Association building. The Norco Christmas Parade is an example of the fund's commitment to support community events that promote civic pride and a sense of community in Norco.

The Norco Economic Development Fund only considers support for programs that serve the Norco and St. Charles Parish communities and their residents with the following priorities:

- **Quality of Life** (i.e., Health, Land Use, Infrastructure, Senior Citizens): Expanding access to services and resources that enhance the quality of life for Norco residents.
- **Small Business Development/New Job Creation:** Support will be given for business development, i.e., training, and technical assistance.
- **Workforce Development/Training:** Target needed programs that strengthen the local workforce.
- **Youth Opportunity** (i.e., Youth Participation/Youth Job Related Activities): Youth community involvement, youth-adult partnerships, youth leadership and youth empowerment activities all beneficially conspire to make young people participants in the life of the community rather than merely spectators or recipients of services.

Recent NEDF grants have been awarded to organizations such as the Norco Civic Association for the Norco Revitalization Project, River Parishes Community Development Corporation for technical training, and St. Charles Parish Public School Foundation for the Students in Need and STEAM Project.

An advisory committee of business and civic leaders meet annually to review grant requests for both funds in the following program areas: arts and humanities, community development, education, environment, human services, health care, community building, and youth development.

Funds Consultant **Lily Galland** noted that a community assessment was conducted in 2017 to ensure that the funds were on track in prioritizing community needs,

understanding what was being done by organizations to address those needs, and identifying the gaps in services. "A third-party survey organization interviewed diverse community members and held focus groups with stakeholders," she explained. "GNOF and our advisory committees reviewed the feedback and updated the grantmaking priorities of both funds to reflect the community need."

A community assessment will be conducted again in the near future with results to be shared with the community.

INVESTING

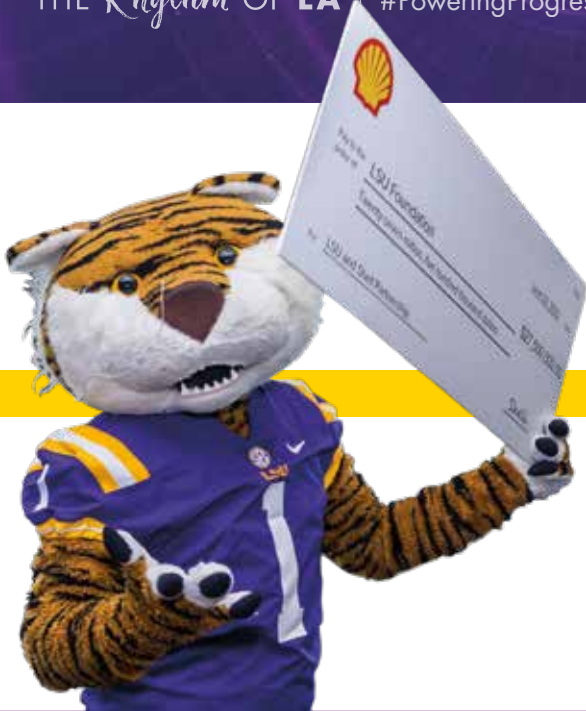
\$27.5M in LA's Future

THE *Rhythm* OF LA | #PoweringProgress



LSU

Institute for Energy Innovation



Shell Invests \$27.5 Million to Establish Institute for Energy Innovation with Louisiana State University

SHELL USA TOOK A CATALYTIC STEP FORWARD TO POWER PROGRESS IN THE PRODUCTION OF MORE AND CLEANER ENERGY WITH AN UNPRECEDENTED \$27.5 MILLION DOLLAR GIFT TO LOUISIANA STATE UNIVERSITY IN BATON ROUGE. THE GIFT, ANNOUNCED JUNE 23 ON THE LSU CAMPUS, IS THE UNIVERSITY'S LARGEST IN HISTORY FROM A FOR-PROFIT CORPORATE PARTNER AND LARGEST PHILANTHROPIC INVESTMENT IN ENERGY-RELATED INITIATIVES.

"Louisiana is a great example of corporations, government and society coming together to address climate change and support a changing energy system. In

partnership with LSU, we can build on this legacy of oil and gas prosperity while further developing lower-carbon energies and technologies to progress Louisiana's energy future. Together, we can create the next generation of energy leaders and help build a net-zero emissions United States," said President, Shell USA, Inc. **Gretchen Watkins**.

President, Shell Global Solutions, US, **Selda Gunsel** explains the company's commitment to the Energy Transition.

Shell's investment of \$25 million will establish the LSU Institute for Energy Innovation to advance reliable, affordable, environmentally responsible energy for all through equity-driven pathways.

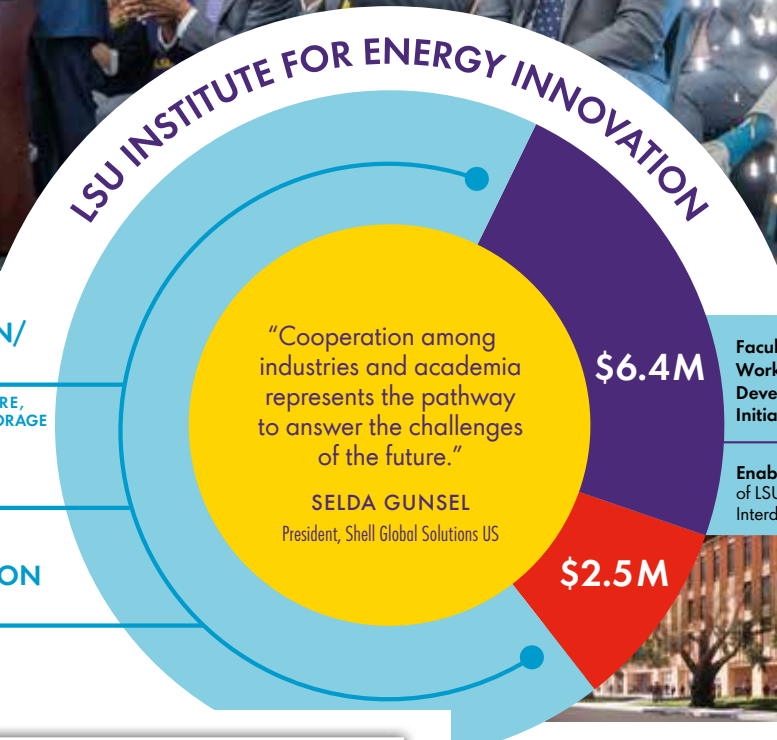
Additionally, a \$2.5 million investment will enable construction of the LSU Our Lady of the Lake Interdisciplinary Science Building for research and learning.

As founding partner of the new Institute for Energy Innovation, Shell demonstrates its commitment to hydrogen and carbon capture, utilities, and storage, the coast, and low carbon fuels. Together, Shell and LSU will serve as a national model for energy-related collaboration at the intersection of science and engineering, seizing the urgent opportunity for scholarship and solution delivery within the Energy Transition.

A highlight of the partnership is the \$6.4 million of the gift directed toward diversity, equity and inclusion initiatives centered on faculty and student support and workforce development within the energy industry.



"The cooperation among industries and academia, along with the acquisition of knowledge from diverse partners represents the pathway to answer the challenges of the future. Shell's goal is to provide more and cleaner energies. There are no single solutions, we are investing in many areas of Powering Progress. We cannot do it alone," stated **President, Shell Global Solutions US, Selda Gunsel**. "It is important to join with academics, government and other industries in the areas of hydrogen, carbon capture, biofuels and low carbon fuels." She noted that the partnership with LSU and its students extends the work to the next generation of scientists.



Gunsel emphasized that providing more energy while reducing CO2 emissions is a huge challenge. "However, we are committed to this challenge," she continued, "and we have set our climate target to become a net zero emissions energy business by 2050 in line with the society and our customers. There is not a single solution to achieve this goal. So we are investing in multiple technology pathways. These include investing in energy efficiency technologies so we can improve the efficiency of our own operations as well as our customers operations. It's about providing more and more low carbon energy products such as renewables, biofuels, hydrogen, electricity, e mobility solutions and also capturing remaining emissions through technologies such as carbon capture and storage, as well as nature based solutions."

**HYDROGEN/
CCUS**

CARBON CAPTURE,
UTILIZATION & STORAGE

COAST

**LOW CARBON
FUELS**

Faculty & Student
Workforce
Development
Initiatives

Enable construction
of LSU Our Lady of the Lake
Interdisciplinary Science Building



Retired Shell SVP US Gulf Coast and member of the LSU Foundation Board **Rhoman Hardy**, LSU President **William Tate** and **Mike the Tiger** celebrate the Shell and LSU focus on the Energy Transition.

"Energy represents a central driver of Louisiana's economy, and Louisiana buttresses the nation's energy supply, putting LSU in the unique position to partner with industry to discover innovative methods to fuel our nation," LSU President **William F. Tate IV** said. "Together with Shell, we invite fellow industry leaders to join us in pioneering the research and development pathways forward to protect and preserve Louisiana's energy economy, while meeting the nation's future energy needs."

"There is an urgent need and opportunity for scholarship, research, discovery and solutions within the areas of hydrogen and carbon capture utilization and storage, the coast, and low carbon fuels," Tate continued. "Together, we will seize the opportunity and meet that need. This gift is how you advance the energy priority and will maximize the state's investment of one time funds in energy related initiatives."

"As

a legacy energy state on the front lines of climate change, Louisiana is uniquely positioned to forge meaningful solutions for a clean energy future," **Governor John Bel Edwards** commented.

"This partnership between Shell and Louisiana's flagship university supports the continued vitality of our state's energy industry as well as Louisiana's emerging role as a national leader in carbon management. I look forward to the contributions LSU and Shell will continue to make here in Louisiana to global energy innovation."



"I am proud and excited to see LSU and Shell help lead the Gulf Coast in the decarbonization transition. We have a flagship opportunity for Shell to build on its foundation and partner with LSU to push the energy transition forward. I have faith that we can achieve incredible results," added GM US Carbon Capture **Lee Stockwell**, an LSU alumnus and Louisiana native. "I'm proud and excited to see Shell and LSU take that next step to develop the science, the technology, and maybe most importantly, the people who are going to guide Louisiana and lead the Gulf Coast into the future."



Sportsman Show is One of a Kind Festival

You ain't seen nothing yet if you haven't attended a Louisiana Sportsman Show and Festival. This year's event, sponsored by Shell, was extra special – it was the first since COVID closed the show two years ago and caused cancellation last year.

Thousands of individuals and families from across the United States, along with a few international visitors, attended the three-day festival focusing on Louisiana's hunting, fishing, boating, camping and outdoor recreational opportunities.



The Sportsman Show and Festival is an opportunity for vendors including boat dealers, campers, and ATV dealers along with a diversity of food and outdoor product companies to showcase the newest and best in the recreational field. Live music and the traditional Fetch-N-Fish presentation featuring **Jason Reynolds** and his high-flying dogs were extra highlights. "The show is much more than an exhibit," emphasizes Sportsman Show Director **Craig Cuccia**. "It is a family event especially for Louisiana people to enjoy the outdoor things that are the glue holding families together. It is a blessing that Shell stepped up to support the show as we help support the many vendors who were shut down during the pandemic."

"Shell was excited to participate as a sponsor and to have a booth so that people could learn more about our company in Louisiana," adds Geismar Corporate Relations Advisor **Jordan Tremblay**. "We were able to feature the #22 Joey Logano NASCAR show car, with a simulator so that everyone could experience what it feels like inside a race car, and our employees talked about Shell's role in the Energy Transition. It's a great opportunity to acknowledge our place in Louisiana and the creative energy that Shell contributes to the area."

"It is a family event especially for Louisiana people to enjoy the outdoor things that are the glue holding families together. It is a blessing that Shell stepped up to support the show as we help support the many vendors who were shut down during the pandemic."

CRAIG CUCCIA | Sportsman Show Director



Look for the 2023 Sportsman Show & Festival March 17–19.

The Battle is Back



Battling for the Paddle is going to be fierce this year. The first United Way of St. Charles Battle for the Paddle since 2019 will determine the best jambalaya and best gumbo cooks in the region in a competition that not only raises money for the United Way but also fills the area with delicious and spicy aromas.

Join Shell Norco's awarding winning gumbo and jambalaya teams along with competitors from all over St. Charles Parish for the **Thursday, October 6, Battle for the Paddle**. The fun, family event is open to the public from 3 PM to 7:30 PM at the Edward A. Dufresne Community Center in Luling.

Nashville Live will be on stage and unlimited samples of gumbo and jambalaya will be available throughout the evening.

For more information or to register a team, contact Tamara Plattsmier at 985-331-9063 or tamarap@uwaysc.org.



FFA Students Recycle at Sportsman Show

"We were extremely excited to participate in the Sportsman Show recycling efforts. The event not only helped raise funds for our program, but more importantly, helped emphasize FFA's focus on hands-on experience and service."

MANDY DELAUNE | St. Amant FFA Advisor

Home is Where the Recycling Begins

Louisiana is where we live and we're proud to call it home.

BECKY COOPER reflects the pride that comes with living, playing, and working in the Sportsman's Paradise. Shell USA Corporate Relations Advisor for Social Investments, Becky recently represented Shell to spearhead the first recycling partnership with the Louisiana Sportsman Show and Festival, its affiliate Trash Rangers, and volunteers from St. Amant High School's FFA program.

The three-day event recycled .24 metric tons of plastic bottles and .34 metric tons of aluminum.

"You know every festival in Louisiana, every activity in our state, involves food and beverage," Cooper explains. "We are the Sportsman's Paradise when it comes to outdoor activities, but we could easily be called the Food Lover's Paradise as well. With that comes lots of cans, bottles and other materials that wind up in a dumpster and ultimately a landfill. The Sportsman Show, and the Jazz Festival earlier this year, provided opportunities for Shell as the major sponsor of both events, to step up and make recycling part of the event."

Becky Cooper, second from left, thanks St. Amant High School FFA students for their recycling work at the Sportsman Show. The students helped to collect .59 metric tons of plastic and aluminum that can be recycled.



"The Sportsman Show, and the Jazz Festival earlier this year, provided opportunities for Shell as the major sponsor of both events, to step up and make recycling part of the event."

BECKY COOPER | Shell USA Corporate Relations Advisor for Social Investments

"At Norco we are working to bring in recycled plastic as a feed and making plastics again as we run the feed through our processing units in a renewable cycle," explains Norco Transformation Manager **Brandon Devillier**. "Shell is a leader in this effort. Norco is the first to be able to do this. The site is set up to be the first manufacturing plant to be able to reconfigure the units that we already have and bring in recycled plastic and produce plastic again. It's pretty awesome to be able to move forward into the energy transition."

FFA, previously known as Future Farmers of America, is a national organization to develop students; leadership, growth and career success through agriculture education. More than 400 St. Amant High School; students enrolled in Agricultural education programs, are FFA members. The largest FFA Chapter in Louisiana, St. Amant was named 2022 Top Overall

Chapter in the State and recognized with numerous national awards.

According to Delaune, the student volunteers worked diligently to collect the bottles and cans throughout the Sportsman Show weekend while also having a close up view of the show's exhibits, vendors, and activities. "Serving the community and having a good-time weekend experience is what living in Louisiana is all about," she adds.

"Shell wants to make sure that Louisiana maintains its Sportsman Paradise reputation

just as we want to make sure that Shell maintains its commitment to environmental awareness and protection," Cooper states. "Recycling and landfill reduction are good for Louisiana, good for Shell and great for all of us who are proud to live in a Sportsman's Paradise."



Norco NEWSLINE

Norco Newsline is published regularly to inform the community about activities at the Shell Norco Manufacturing Complex. Please address inquiries to:

Rochelle Touchard, Corporate Relations
Shell Norco Manufacturing Complex
15536 River Road | P.O. Box 10 | Norco, LA 70079
504-465-6667

Numbers and Addresses to Know:

St. Charles Emergency Operations Center
985-783-5050
Shell Norco Site Team Lead
504-465-7342
Shell Norco Community Information Line
504-465-7483

Websites to Know:

www.shell.us/norco
www.shell.us/louisiana
www.norco-air.info

PRSR STD
U.S. POSTAGE
PAID
NORCO, LA
PERMIT #50

POSTAL PATRON

Live on Stage in St. Charles Parish

Broadway-style entertainment returns to St. Charles Parish and you can be center stage for a full season of live performances in The Shell Theatre at the Lafon Performing Arts Center in Luling. Following a two-year Covid-related hiatus, the Box Office is now open with season tickets and single show tickets on sale.



Experience World-Class Performances In
THE SHELL THEATRE

2022-2023 SEASON of MUSIC • DANCE • THEATRE



A trip down memory lane with Lorna Luft, Judy Garland's daughter.

10/1/22



The Aretha Franklin experience like no other; the ultimate tribute to the Queen of Soul.

10/21/22



Celebrate the season with this holiday ballet performed by the River Region Ballet with music by a full, live orchestra.

12/17/22 & 12/18/22



A cappella group from Florida known for performances of Disney and Broadway hits with a full, live orchestra.

3/13/23



The first professional company dedicated to the tradition of stepping, Step Afrika! is a cohesive experience.

4/1/23



A tribute to The Beatles and much more. Experience an engaging trip through the iconic music catalog of the band of the century.

5/13/23



Go to **lafonartscenter.org** for more information and to purchase tickets or call the Box Office at **985-331-3670**.