



SITE MAP

Fenceline Monitoring Locations

- PAMS - Primary Location
- PAMS - Location not required by EPA Method 325 A & B
- MET Tower
- ◆ CAMS Locations
- Monitoring Perimeter

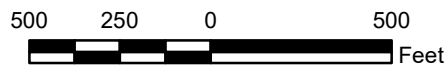


Environmental Resources Management, Inc.

April 2022



Scale in Feet
1 inch = 530 feet



Notes:

1. PAMS 002, 004, and 006 placement not subject to EPA Method 325 A & B
2. Distances between the monitoring stations were measured along the monitoring perimeter. Distances are in linear feet.
3. All main roads within the facility are 2-way traffic.

Date: April 7, 2022
Version: 7.0
Prepared by: Brian Sterner (ERM)
Checked by: _____
Approved by: _____

Fenceline Monitoring Locations

Shell Polymers
Monaca, PA